
User's Manual

=====

DVB-S2 High Definition

Set Top Box

=====



SAFETY PRECAUTION

CAUTION:



The lightning flash with arrowhead symbol, within an equilateral triangle, is intended to alert the user to "dangerous voltage" and to prevent from a risk of electric shock.



Warning:

To reduce the risk of electric shock, don't open the cabinet. Refer servicing to qualified personnel only.



The exclamation point within an equilateral triangle is intended to alert the user to important operating and maintenance (servicing).

Note: To ensure proper use of this product, please read this User manual carefully and retain for further reference.

WARNING: Do not use this STB where contact with or immersion in water is a possibility. Do not use near flower vase, washbowls, kitchen sinks, laundry tubs, swimming pools, etc.

WARNING: Do not put the candle or lamp stand on the cabinet; otherwise, there is the danger of fire.

WARNING: The unit should be connected to a power supply only of the type described in the operating instructions or as marked on the unit. If you are not sure of the type of power supply (for example, 120 or 230 V) to your home, consult your local dealer or local power company.

WARNING: This product installs diodes. Do not open the cabinet or touch any parts in the inner mechanism. Consult your local dealer for technical service if the opening is required.

Unit Cleaning: After the unit power is turned off, you can clean the cabinet, panel and remote control With a soft cloth lightly moistened with a mild detergent solution.

Attachments: Never add any attachments and/or equipment without the manufacturer consent; as such additions may result in the risk of fire, electric shock, or other personal injury.

Locating: Slots and openings in the cabinet are provided for ventilation to protect it from overheating. Do not block these openings or allow them to be blocked by placing the STB on a bed, sofa, or other similar surface, nor should it be placed over a radiator or heat register.

Power-Cord Protection: Place the power-supply cord out of the way, where it will not be walked on. Please take special attentions to cords at plugs, convenience receptacles, and the point where they exit from the unit.

Object and Liquid Entry: Never put objects of any kind into this STB through openings, as they may Touch dangerous voltage points or short-out parts that could result in a fire or electric shock. Never spill any liquid on the STB.

Note: Moisture may be formed on the lens In the following conditions:

- when the unit suddenly move from a cold environment or an aircondition room to a warm place.
- immediately after a heater has been turned on.
- in a steamy or very humid room.

If the moisture forms inside the unit, it may not operate properly. To correct this problem, turn on the power and wait about two hours for the moisture to evaporate.

Parts Replacement: When the unit parts need to be replaced, user should make sure the service technician use the replacement parts specified by the manufacturer or having the same characteristics as the original part. Unauthorized replacement may put the unit In the risk of fire, electric shock or other hazards.

Safety Check: After all the maintenances and repairs are done, user is required to request the service technician to conduct the overall safety check to ensure the machine is In the proper condition.

SPEC

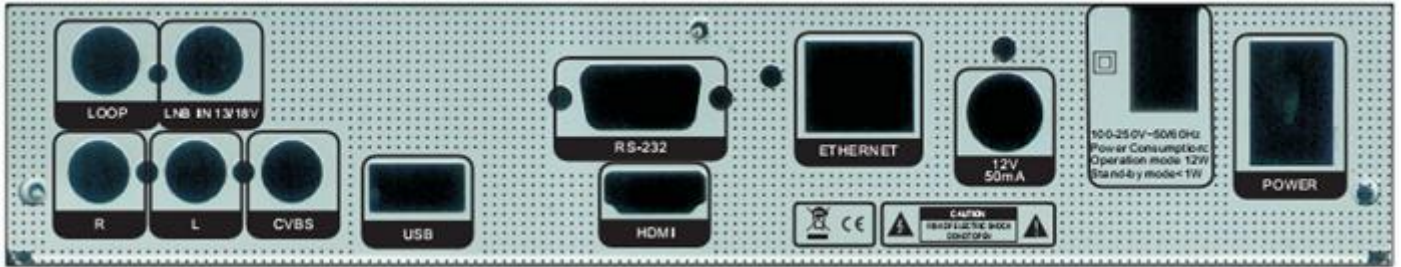
Accessories	Main board (DB-M3602-02V01), 48 Keys IR controller, USB HDD BOX(customer option)
Board configuration	396MHz MIPS CPU, 128MB DDR400 RAM, Memory Clock 198Mhz, 4MB Serial Flash, Single Tuner, DVB-S2 demodulator,
Power Supply	Input 100V ~ 240V 50/60Hz
Power Consumption	30W Max / 1W Standby (it's optional by customer's board)
RS232	For FW Upgrading.
Standard Receiver Standard	DVB-S2 Standard (ETSI EN 302 307)
Input Frequency Range	950MHz ~ 2150Mhz
Input Signal Level	-25dBm ~ -65dBm
Demodulation	QPSK, 8PSK, 16APSK
Transport Stream	MPEG-2 ISO/IEC 13818 Transport Stream Specification
MPEG Profile Level	MPEG2 SD, MPEG2 HD, H.264/AVC SD, H.264/AVC HD
LNB Power & Polarisation	Vertical +13.5V, Horizontal 18V, Current: MAX 500ma,
Multi Satellite receiving	22K switcher, DiSEqC1.0, DiSEqC1.1, Unicable , DiSEqC1.2, USAL
Conditional Access system	1 Common Interface Slots ; 1 CA card reader Slots
A/V Output ports	YPrPb, RCA with CVBS, SCART with CVBS, HDMI(HDCP), Left/Right analog audio output(RCA), Digital audio output(SPDIF with coaxial or fiber)
Aspect Ratio	Auto, 16:9 Pillar box, 4:3 Pan & Scan, 4:3 Letter Box.
Audio Decoding	MPEG1 layer I, MPEG1 layer II, MPEG1 layer III, MPEG2, AC3.
Audio Mode	Stereo/MONO/Left/Right
DVR supporting	DVR with USB HDD, Time shifting with USB HDD
USB2.0 High Speed HOST	1 USB2.0 Port, USB media player to playback the media in USB flash disk or USB HDD or USB card reader with memory card or FW Upgrading.
File system	FAT12, FAT16, FAT32, NTFS (only support first partition)
Media Supporting	JPG, BMP, MP3, WMA
Ethernet Interface	10/100Mbit
Storage Temperature	0°C to +50°C

Front Panel



Bottom	Name	Function
STAND BY	Stand by	Switch standby/play mode
MENU	Main Menu	Enter into main menu
OK	OK	confirm
-VOL	Volume -	Volume down
+VOL	Volume +	Volume up
-CH	Channel -	Channel down
+CH	Channel +	Channel up

Rear Panel



Bottom	Name	Function
POWER	Power swithch	On/off
ETHERNET	ETHERNET	RJ-45(to ethernet)
RS-232	RS-232	Connect to a PC fro SW upgrade
HDMI	HDMI port	HDMI 1.3output
PVR	USB port	Connect to usb
CVBS	CVBS	Connect TV through RCA
AUDIOR/L	AUDIOR/L	Connect to audio R/L to TV/ Audio
LNB IN	LNB IN	Connect to satellite antenna
LNB OUT	LNB OUT	Connect to the other receiver

CONTENTS

QuickStart	7
RemoteController	9
BasicOperations	12
1.Edit Channel	12
1.1TV Channel List	12
1.2Radio Channel List	14
1.3Favorite	14
1.4Delete All	14
2.Installation	15
2.1Antenna Antenna&satellite Quick Setting	15
2.2SatelliteList	15
2.3Antenna Setup	16
2.4Single Satellite Scan	17
2.5MultiSatellite Scan	17
2.6Transponder List	17
2.7LNB PowerSetting	18
3.System Setting	19
3.1Language	19
3.2TV system	19
3.3Display Setting	19
3.4Local Time Setting	20
3.5Timer Setting	20
3.6Parental Lock	20
3.7OSD Setting	20
4.Tools	21
4.1Information	21
4.2Factory Default	21
4.3Common Interface	21
4.4CA Slot Setting	22
4.5Upgrade By USB	22
4.6Dump By USB	22
4.7Remove USB Device Safely	23
5.Media	23
5.1HDD Information	23
5.2PVR Setting	23
5.3Media Player	23
6.NetworkSetup	25
6.1Network Setup	26
6.2Cccam Client Setup	26
6.3MGCamd Plug Setup	27
6.4Twin Protocol Setup	28
6.5Newcamd Sever Setup	28

Quick Start

Turn on STB

Connect the STB's main power and turn on the power switch.

When the first time turn on the STB there's no channels in the system. So the STB will enter into mainmenu directly.

1. If user connect STB with TV by A/V cable the TV will show "no OSD, pls press V. Format" when the first time you turn on the STB. Pls press "V. Format" button of the remote then the STB will enter into mainmenu.
2. If user connect STB with TV by HDMI cable, the STB will enter into mainmenu directly.

Q&A

Q1: The power the STB was turned on and not in standby mode, but there's nothing showed on the TV screen.

A1: Make sure the TV set has been set to the correct video input (not the TV channels). For example, if you have connected the unit with the video1 input of the TV set, the TV set has to be switched to Video 1.

Q2: The power of my STB has been turned on and not in standby mode, but the TV screen showed nothing except "No signal".

A2: That means the channel, which you select, is no signal. It could be several causes:

1. The channel which you select is not in your allocated satellite. The simple solution is to change channel.
2. The signal of current TV channel is too weak. You can try to change channel to other strong signal channels. If the problems still exist, please consult your local dealer or other professionals for technical service.
3. You use the Dual LNB and you need to modify LNB type.

Channel scan

1. In Main menu we can see "Installation". Press UP/DOWN to move the highlight to "Installation" and then press OK to enter into Installation menu. In Installation menu please choose to enter Satellite List.

MENU-Installation-Satellite List

2. In satellite list user needs to select satellite according to their needs.

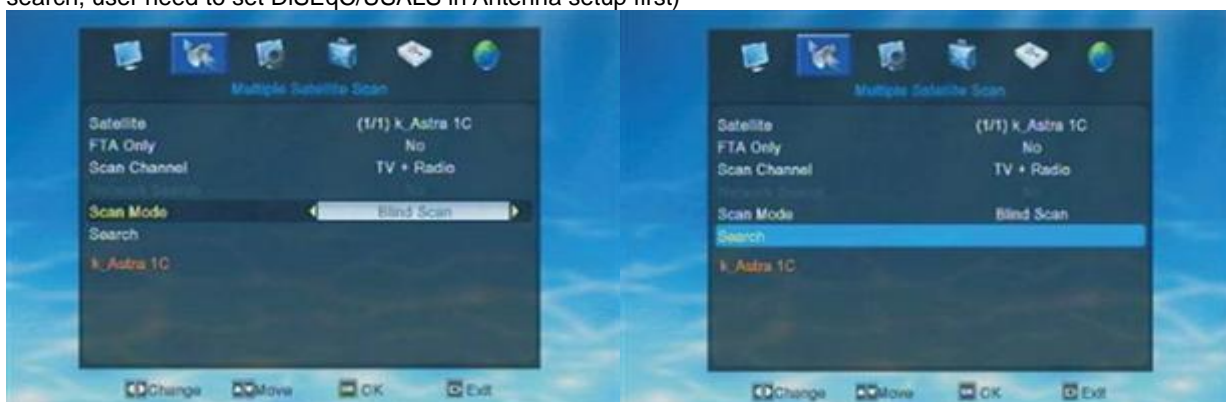
3. After user chooses satellite, we need to go back to Installation menu and then choose Antenna Setup.

4. User needs to set exact parameters of the antenna he/she chooses.

5. After user sets the parameters, we need to go back to Installation menu and choose Single/Multi Sat. Search.



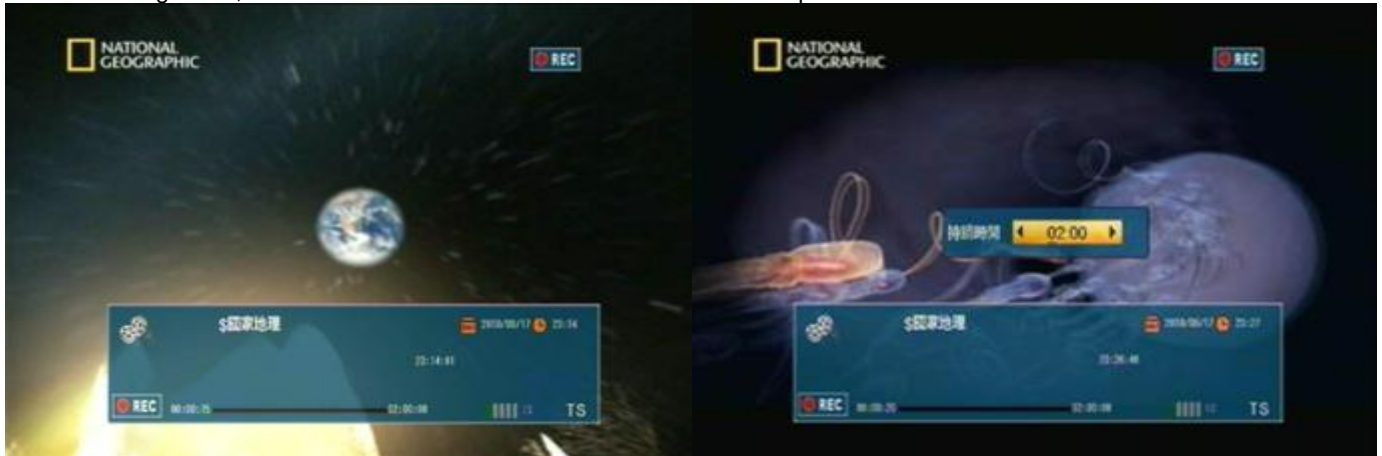
If user only selected one satellite then please select Single Satellite Search and select auto scan to search programs. If user selected more than one satellite in the satellite list then please select Multi satellite search and auto scan to search programs. (for Multi satellite search, user needs to set DiSEqC/USALS in Antenna setup first)



the above picture shows the steps of Multi satellite search

Record

In recording mode, there will show a window on the screen. Like below pic. Shows.



In recording mode, user can press RECORD again to set Duration.

In playing mode, press RECORD can record the current playing show. After user press RECORD there will show a symbol on the right side of the screen, like "REC".

*The recorded file will save to U-disk directly. So before we start to record, user need to connect a U-disk with the STB. user can't apply the record function if no U-disk found by the STB.

In recording mode, there will show a window on the screen. Like the above pic. Shows.

User can find some informations of the recording program, the name, date, time...and how long the program has been recorded. User can pause or stop recording the program according to their own needs.

When press PAUSE, the STB will pause recording. User can press PLAY to go on recording or press STOP to stop recording and exit from Record. When exit from recording the STB will ask user "Are you sure to exit recording?". Here user need to choose YSE or NO according to their own need.

When press STOP, the STB will stop recording. There will show a dialogue, asking user "whether to save the recorded file." User need to choose YSE or NO according to their own need.

Q&A

Q1: Why my record files can't not be saved?

A 1 : The recorded program can only be saved when it's recorded for more than 2 minutes.

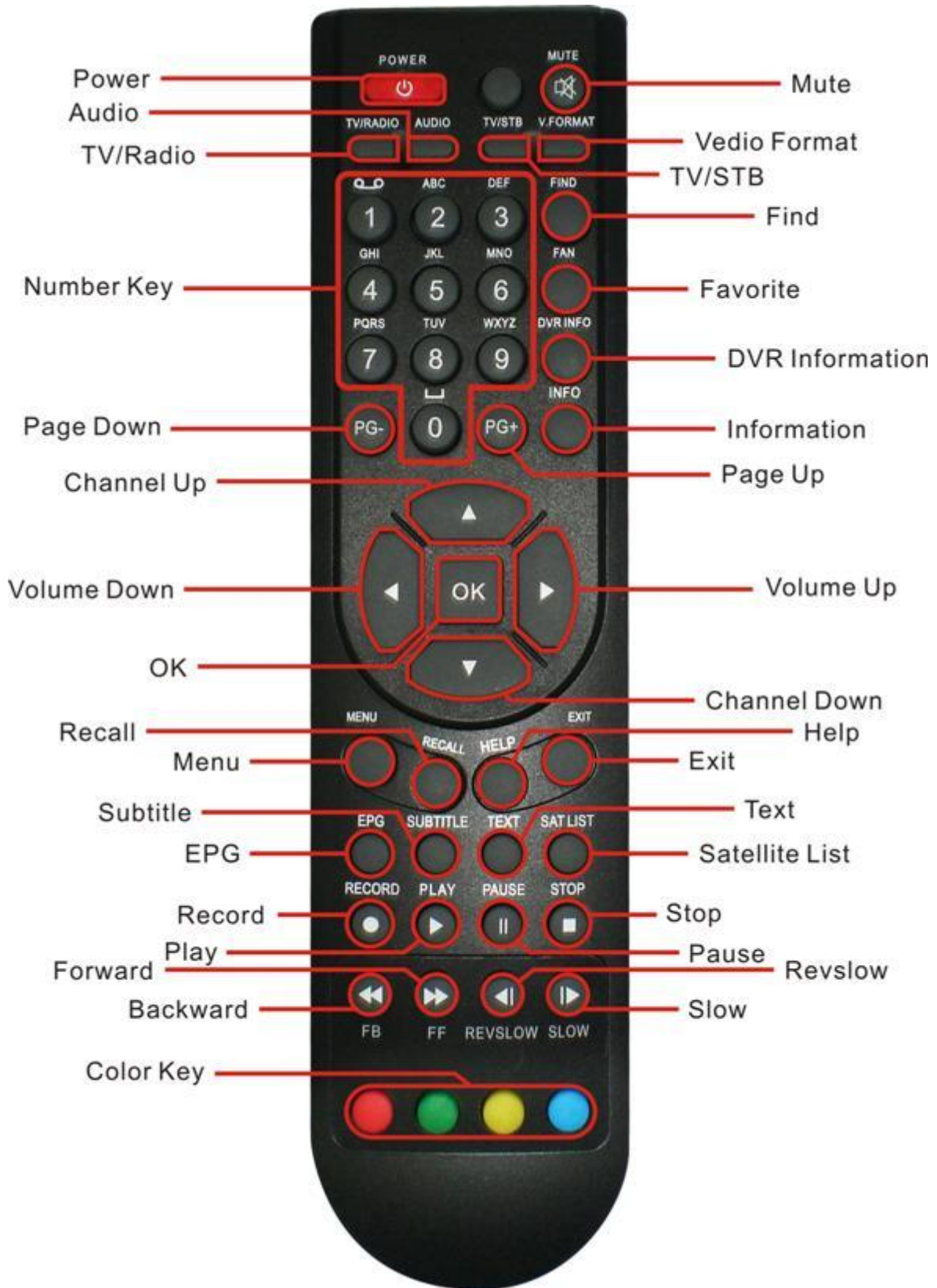
Q2 : How long can a program been record?

A 2 : It depends on the storage of user's U-disk.

Q 3:The record files will be saved in what format?

A 3: All record files will be saved as *.ts.

Remote Controller



Power

Switch the STB between standby and play mode.

AUDIO

In full screen, press AUDIO there will show a window of "Audio".



User can modify the audio track by press UP/DOWN and press LEFT/RIGHT to change the audio mode (Left/ Right/ Stereo/ Mono).

V.FORMAT

In full screen, press V.FORMAT one time can check the current video output resolution.



Press V.FORMAT continuously, the system will switch the Video output resolution.(576P -> 480P 576i -> 480i -> 720P_50 -> 720P_60->1080i_50 -> 1080i_60)

TV/RADIO

Press TV/RADIO to switch between TV and RADIO playing.

MUTE

In play mode, press MUTE one time to mute the sound. Press again to restore the sound.

TV/STB

Switch between TV mode and RADIO mode.

FIND

In full screen, press FIND can open the "Find" window.



User can press Left/Right/Up/Down to move highlight to choose the letter and press OK to input the selected letter into the dialogue. The searching result will display on the right of this window. When enter the letters user can press Red color key to delete the char, Blue color key to confirm and Green color key or EXIT to cancel and exit from FIND window.

PG-/PG+

In Channel list, press PG-/PG+ can page up/down the channel list.

In full screen, press PG-/PG+ can switch satellite directly.

FAN/FAV

In full screen, press FAN/FAV then there will show a window of "Favorite Group" on the left of the screen.



User can move highlight to choose favorite group by press UP/DOWN and press OK to check the channels in the chose group. In the chose group user can press UP/DOWN to choose the channel he/she want then press OK to switch to the chose channel.

*If user didn't add/set any favorite channel, there will no channels available in each group.)

User can go to Chapter1. Edit Channel-TV Channel list-FAV to check how to add the Favorite channel.

DVR INFO

In full screen, press DVR INFO can check current program's informations.

EXIT

Press EXIT to exit from present window / menu / dialogue.

SATLIST

In full screen, press SATLIST can open satellite list. User can find all the scanned satellite in the list.

INFO

In full screen, press INFO there will show a window on the bottom of the screen. User can see the parameters of current channel, like name of the channel, date...



Volume up/Volume down(LEFT/RIGHT)

In full screen, press LEFT/RIGHT to adjust the volume.



MENU

Press MENU one time can enter into main menu. Press MENU again or press EXIT can exit from the main menu and enter into playing mode.

EPG

The STB has an Electronic Program Guide(EPG) to help you navigate channels through all the possible viewing options. The EPG supplies information such as channel listings and starting and ending times for all available channels. Press EPG the EPG window will show on the screen.

SUBTITLE

In full screen, press SUBTITLE can switch subtitle on or off. If the channel you chose don't have a subtitle information, the STB will show "No Date" on the screen.

PLAY

Press PLAY to play the program or the recorded show.

RECALL

In full screen, press RECALL the STB will switch to the previous channel from the current one.

TEXT

In full screen press TEXT can open teletext page on the channel which has teletext information. If the channel you chose don't have teletext information, the STB will show "No Teletext Date" on the screen.



PAUSE

In play mode, press PAUSE one time the picture will be paused., but the sound of the channel will still continue. Press PAUSE again, the playing show will skip over to the paused pictures and corresponding with the sound.

In record playing mode, press PAUSE can pause the current playing show.

Channel List



RECORD

In playing mode, press RECORD can record the current playing show. After user press RECORD there will show a symbol like "REC" on the right side of the screen.

STOP

In record playing mode, press STOP can stop playing the current show.

Basic Operations

When first time turn on the STB, the system will enter into the Main Menu, as following shows.



There are six symbols on the left side of Main Menu. Choose different symbol, user can enter into different menus, like Edit Channel, Installation, System Setting, Tool, Media and Network Setup.

Users can press LEFT/RIGHT key to move the highlight and press OK to choose the menu.

1 . Edit Channel

Choose the 1st symbol “Edit Channel” on the main menu, then press OK to enter into the Edit Channel menu.



Press UP/DOWN to move highlight and press OK to enter into the choice. If the menu has been locked, the STB will ask user to input password. The default password is “0000”

Press EXIT to exit form the current menu.

1.1TV Channel List

When enter into “TV Channel List” menu, the system will show a menu as below.

In TV Channel List menu user can find all the available channels in the list. User can press UP/DOWN to choose the channel and then press OK to perview. Right below the preview window, user can find some detail informations of the playing channel. Such as the name of the satellite, the name of the channel, then parameter and the PID.



1.1.1 Favorite



1 . In TV Channel List menu press FAV/FAN can open “Favorite” window ,like above pic. shows.

2 . There's 8 groups in Favorite window. User can press UP/DOWN to choose the group and press OK to add the highlighted channel into the channel list.

Then user can check all the channels in that group.

1.1.2.Lock

User can set channel/channels to be locked.

1 . Press Red key to enter into Lock setting mode.

2 . Press UP/DOWN to move highlight and press OK to confirm the choice. After that there will show a “lock” mark on the right side of the chose channel.



3 . Press EXIT to exit from the current mode.

After exit from the window, the STB will ask user to input password if he/she want to watch the locked channel. The default password is "0000".

1.1.3.Skip



1 . Press Green color key can enter into Skip mode.

2 . In Skip mode, press UP/DOWN to move highlight and press OK to make a "skip" mark on the right side of the chose channel.

3 . Press EXIT to exit from the current mode.

After exit from the window and go back to playing mode. The STB will skip the marded channel while user change channels in full screen.

1.1.4.Move

1 . Press Yellow color key can enter into Move mode.

2 . In Move mode, press UP/DOWN to move highlight and press OK to make a "Move" mark on the right side of the chose channel.

As the pic. Shows.



3 . User can press UP/DOWN to move the marked channel to the position he/she want and press OK to confirm.

4 . . Press EXIT to exit from the current mode.

1.1.5.Edit

Press Blue color key can enter into Edit mode.



1 . Sort

In Edit mode, press Red color key can open the window of "Sort". As the pic. Shows.

User can press UP/DOWN to move highlight and press OK to choose.



There's 4 ways for sorting.

- ✧ Name (A-Z): Sorting in Alphabetical Order. Ignore "\$" symbol.

- ✧ Name (Z-A): Sorting in Alphabetical Order. Ignore "\$" symbol.

- ✧ FTA: Sorting channel through free and scramble sequence. Free channels will in the front of the channel list while scrambled channels will in the end of the channel list.

- ✧ Lock: Accumulated all locked channels and list in the last of TV channel list.

2 . Edit

In Edit mode, press Green color key can enter into "Edit" mode. User can rename the channels in the channel list. Press UP/DOWN to choose the channel, which need to be renamed and press OK to open the Rename window.



The above pic. is the "Rename window".

- ✧ Red color key can switch between capital letter and small letter.
 - ✧ Green key can delete the char on the cursor.
 - ✧ Yellow key can save the modification.
 - ✧ Blue key can cancel the operation.
- Press Bule key or EXIT to exit from current mode.

3 . Delete

In Edit mode, press Blue color key can enter into "Delete" mode.

Press UP/DOWN to move highlight and press OK to make a deleted mark on the right side of the channel. When user exit from the delete mode, the marked channel will be deleted .

1.2.Radio Channel list

Basically, the operation of "Radio Channel List" is the same with "TV Channel List". There's only one difference between the operation of the two list.

In "Radio Channel List" there's no video date, so when playing Radio there's no preview show on the window.



1.3.Favorite

When enter into "Favoritet" menu, the system will show a menu as below.



Press OK on any of the Fav group can open a rename window, as below shows.



- ✧ Yellow key to switch between capital/small letter
 - ✧ Red key to delete input character
 - ✧ Blue key to save the edition and close the window
- Press EXIT to exit from current window.

1.4.Delete All

Press UP/DOWN to move the highlight to "Delete All"



Press OK ON "Delete All" there will show a warning dialogue. The dialogue shows " Warning! Do you really wanto to delete all channels?".

User can press LEFT/RIGHT to move the highlight between YES and NO and press OK to confirm their choice.Choose YES to delete all channels.

Q&A

Q : If I incautiously delete all channels, what should I do?

A : 1. User can go to Installation menu and scan the satellite once again.

2. If there's channel in the STB since the first time user get it, then user can restore the channels by "Factory Setting".

2. Installation

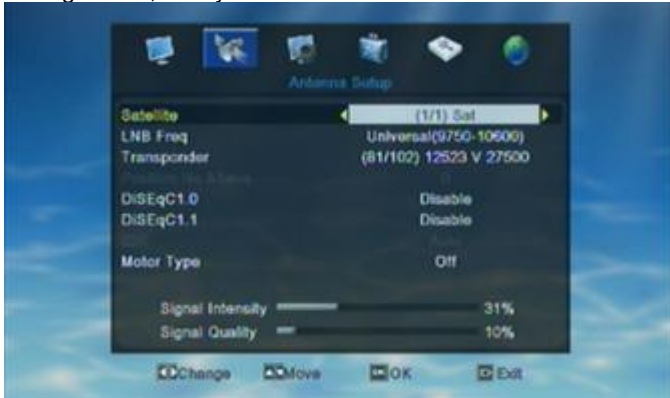
Choose the 2nd symbol "Installation" on the main menu, then press OK to enter into the Installation menu.



In Installation menu, user can press UP/DOWN to move highlight and press OK to confirm the choice.

2.1. Installation Antenna&Satellite Quick Setting

When enter into "Installation Antenna&Satellite Quick setting" menu, the system will show a menu as below.



In "Installation Antenna&Satellite Quick Setting" menu user can press Left/ Right to select "Local Longitude" and "Local Latitude". User can set USALS, DiSEqC1.2 and Motor by press UP/DOWN and press OK to confirm the choice.

- ✧ Set Motor AS USALS ON ALL Satellites
- ✧ Set Motor AS DiSEqC1.2 ON ALL Satellites
- ✧ Disable Motor Setting on ALL Satellites

2.2. Satellite List

When enter into "Satellite List" menu, the system will show a menu as below.

User can edit all the satellite of the satellite list, add new satellite to the satellite list or delete satellite from the satellite list.



- ✧ Red key can open the Edit window.
- ✧ Green key can open the Add window.
- ✧ Blue key can delete the chose satellite.

User can rename and Edit the satellite.

In Satellite list menu press Red key to open the "Edit" window and then edit the satellite information according to user's needs.



- ✧ Red key to switch between capital/small letter
- ✧ Green key to delete input character
- ✧ Yellow key to save the edition and close the window
- ✧ Blue key to cancel addition operation and exit from the window

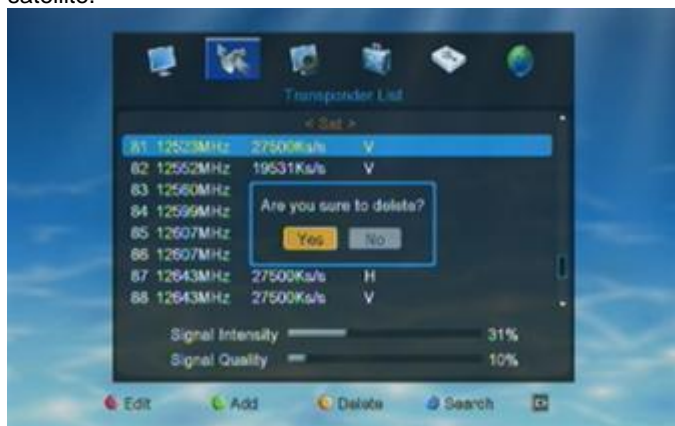
If user didn't find the satellite he/she need, user can add new satellite into the satellite list. Add new satellite user only need to input a name and the longitude of the satellite. As following shows.



- ✧ Red key to switch between capital/small letter
- ✧ Green key to delete input character
- ✧ Yellow key to save the edition and close the window
- ✧ Blue key to cancel addition operation and exit from the window

User can delete the satellite from the satellite list by pressing the yellow key in Transponder List menu.

Press UP/DOWN to move highlight to choose the satellite and then press Blue color key to delete the chose satellite.



After user press the Blue key, there will show a dialogue asking “Are you sure to delete?”. User can choose YES or No according to their needs.

2.3. Antenna Setup

When enter into “Antenna Setup” menu, the system will show a menu as below.



1 . Satellite: press Left/Right to choose satellites or press OK and enter into satellite list then press UP/DOWN to choose the satellite directly.

2 . LNB Freq: press Left/Right to choose parameter or press OK and enter into the parameter list to choose directly.

Options: 5150/ 5750/ 5950/ 9750/ 10000/ 10050/ 10450 / 10600/ 10700/ 10750/ 11250/ 11300/ 5150-5750 /5750-5150/ Universal (9750-10550)/ Universal (9750-10600)/ Universal (9750-10700)/ Universal (9750-10750).

3 . Transponder: press Left/Right to choose the TP or press OK to enter into TP list to choose directly.

4 . Position No.&Save: press Left/Right to choose.

5 . DiSEqC1.0: press Left/Right to choose

Option: Disable/ Port 1/2/3/4

6 . DiSEqC1.1: press Left/Right to choose
Option: Disable/ 1 Cascade M1 Port 1,2,3,4/ 1 Cascade M2 Port 1,2,3,4/1 Cascade M3 Port 1,2,3,4/2 Cascade Port 1,2,3,4,5....16.

7 . 22K: press Left/Right to switch ON/OFF.

8 . Motor Type: press Left/Right to choose
Option: OFF/ DiSEqC1.2/ USALS.

When the Motor Type set as DiSEqC1.2/ USALS, then user can do the Motor Setting. Press OK on “Motor setting” there will show a new window as the below picture shows.



Position Setting

Press OK on “Position Setting” can enter into it's setting window as below.



User can set the Satellite, Transponder, Position NO.& Save...in this window by press Left/Right.

Press OK on “Go to X” can enter into the choice list. User can set according to their needs. After user finished this setting there will show a dialogue “Want to move the position”. User can choose “Stop” to stop move or EXIT to exit from the dialogue.

If the position is properly set, there will show a dialogue “Are you sure to change this satellite's Position?” when user press OK on “Save”. But if the position is not properly set, there will show a dialogue “Position not specified (1-63)”. User need to reset the position and then save the setting.

Press OK on “Recalculation”, there will show a dialogue “Are you sure re-calculate all satellite positions?”. User can choose YES or NO according to their needs.

Limit setup

Press OK on "Limit seup" can enter into it's setting window as below.



Press Left/Right to make choice. When the "Limit setup" set as West Limit or East Limit, user can switch "Limit setup" or "Stop". When press OK on "Go to Reference" there will show a dialogue "Please wait for moving dish to reference point". User can wait for the dish moving or choose "stop" /EXIT to exit from the dialogue.

2.4. Single Satellite Scan



press Left/Right to select the choice.

1. Satellite: press Left/Right to select the choice or press OK to enter into the satellite list to choose directly.

2 . FAT Only: press Left/Right to select the choice.

Option: YES/ NO

Choose YES, the STB will only scan free channles from the satellite. Choose NO, the STB will scan all available channels from the satellite (free channels and scrambled channels).

3 .Scan Channel: press Left/Right to select the choice.

Option: TV+Radio/TV Channel/ Radio

Choose TV Channel, the STB will only scan TV channles from the satellite. Choose Radio, the STB will only scan radio channels only. Choose TV+Radio the STB will scan all available channels from the satellite (all TV and Radio channels).

4 . Network Search: press Left/Right to choose YES/NO.(only in "Preset scan" mode needs to set "Network

search")

5 . Scan Mode: press Left/Right to choose "Blind scan" /"Preset Scan".

6 . Search: press OK on "Search" the STB will start to scan the set satellite.

When the STB finished blind scan, there will show a window as below.



2.5. Multi Satellite Search

Basically, the operation of "Multi Satellite Search" is the same with "Single satellite search". But before user start to apply Multi Satellite Search, he/she needs to set and switch on the DiSEqC or USALS first. If user didn't set or switch DiSEqC or USALS, the STB will only scan one satellite when user apply the Multi Satellite Search Auto/Blind scan.

If DiSEqC or USALS has prpperly set, user can see the name of satellite right below the "Search".

Press Left/Right to select the choice.

2.6. Transponder List

When enter into "Transponder List" menu, the system will show a menu as below.



◇ Red color key can open "Edit" window.

◇ Green color key can open "Add TP".

◇ Yellow color key can Delete.

◇ Blue color key can open "Search" window.

After user chose the TP he want to edit, he/she can press Red color key to open the window of "TP Edit". As the

picture shows.

In "TP Edit" user can edit the chose TP. Like the Frequency, Symbol Rate and Polarity. After finished the setting pls press OK on "Save" to save the settings. If user don't want to save the setting, he/she can press OK on "Cancel" or EXIT to exit form the current window without saving any settings.

In TP list menu, press Green color key to open the window of "Add TP". As the picture shows.



In "Add TP" user can add a new TP into the TP list. To add a new TP, user need to set the Frequency, Symbol Rate and Polarity of the TP. After finished all the setting pls press OK on "Save" to save the setting.

If user don't want to save the setting, he/she can press OK on "Cancel" or EXIT to exit form the current window without saving any settings.

In TP list menu, press Yellow color key to delete the chose channel. As the picture shows.



After press Yellow color key there will show a dialogue "Are you sure to delete". User need to choose YES or NO according to their needs.

Choose YES to delete the TP.

Choose NO or press EXIT will exit from this dialogue and the TP will not be deleted.

Q&A

Q : How can I restore the deleted TP?

A : User can press Green color key to add a new TP. Input the deleted TP's Frequency, Symbol Rate and Polarity in "Add TP" window and press OK on "Save" to save the settings. Then user can find the deleted TP on TP list again.

In TP list menu, press Blue color key to open "TP search" window. As the picture shows.



Press OK on "OK" in the "TP search" window the STB will start to scan the TP.

Press OK on "Cancel" or press EXIT can exit from current window without scanning TP.

2.7. LNB Power Setting

When enter into "LNB Power Setting" menu, the system will show a menu as below.



1 . LNB Power: ON/ OFF

When the LNB is set ON, the STB will supply power to satellite antenna. When the LNB is set OFF, the STB will not supply power to satellite antenna.

2 . Channel Play Type: All/ Free/ Scrambled

If user choose "Free", the STB will skip all scrambled channel when user press CH+/CH- to change channels in full screen.

If user choose "Scrambled", the STB will skip all free channels when user press CH+/CH- to change channels in full screen. If user choose "All", the user can find all the available channels when user press CH+/CH- to change channels in full screen.

3 . Beeper: ON/ OFF

4 . BER: ON/OFF

Press EXIT to exit from current window.

3 . System Setup



In system setup menu, user can press UP/DOWN to move highlight and press OK to confirm the choice. If the STB has been set a menu lock, the system will ask user to input password. The default password is "0000"

3.1. Language

When enter into "Language" menu, the system will show a menu as below.



1 . Language: the STB can support languages like English, French, German, Russian, Arabic, Portuguese, Turkish, Spanish, Polish and Italian.

2 . First Audio: some channels have more than one audio language for choosing, so user can set a first audio for the channel. If the playing channel has the same audio as the "First language" user set, then the STB will play this audio language as default.

3 . Second Audio: if the channel has no correspond audio with "First Audio", but have corresponded audio with "Second Audio", system will play the second audio language as default. If there's no audio language correspond with "Second Audio" then the STB will play the default language of the current playing channel.

4 . Subtitle Language: user can set subtitle language according to he/her needs. If the channel stream have the language user chose as the subtitle language then user can see the subtitle when watch the channel. If the channel stream don't have the language user chose as the subtitle language then user can't see the subtitle. When user press SUBTITLE there will show a dialogue as "No date!".

5 . Teletext: user can set teletext language according

to he/her needs. If the channel streams have the set language, then user can see the teletext in set language. If there's no set language in the channel stream, then STB will not show the teletext in set language but in the default language of the channel.

3.2. TV System

When enter into "TV System " menu, the system will show a menu as below.



1 . Video Resolution: press Left/Right to change the resolution one by one or press OK on "Video Resolution" to enter into the resolution list to choose directly. Option: 1080i_60 /480i/480p/576i/576p/720p_50/720p_60/ 1080i_60. The above resolutions is the one STB can support. If the STB can't work properly on any of the above resolutions, maybe it's the user's TV don't support the applied resolution. So before user set the Video resolution, pls check the TV's best resolution first.

2 . Aspect Mode: press Left/Right to choose.
Option: Auto/ 4:3PS/4:3LB/16:9

3 . Video Out: press Left/Right to choose
Option: YUV/RGB

4 . Digital Audio Out: press Left/Right to choose.
Option: LPCM out/BS out

3.3. Display Setting

When enter into "Display Setting " menu, the system will show a menu as below.



User can set Brightness, Contrast and Saturation in this menu. Use UP/DOWN to choose Brightness/Contrast. Saturation and press Left/Right to set each of them.

3.4. Local Time Setting

When enter into "Local Time Setting" menu, the system will show a menu as below.



1 . GMT Usage: press Left/Right to switch ON/OFF

When GMT is ON, user can set the "GMT offset" and " Summer Time". While when GMT is OFF, user can't set "GMT offset" and " Summer Time", but "Date" and "Time".

2 . GMT offset: press Left/Right to choose. User need to set the GMT according to he/her own location.

3 . Summer Time: press Left/Right to switch ON/OFF

4 . Date: user need to input the date by press the number key and press Left/Right to move the highlight to the next position.

5 . Time: user need to input the date by number key and press Left/Right to move the highlight to the next position.

After user finished local time setting press EXIT to exit form the current window. If the user didn't input the time/date properly, there will show a dialogue as "Invalid input! Continue to edit?". Choose YES to continue to edit, choose No to exit from the window without saving any settings.

3.5. Timer Setting

When enter into "Timer Setting" menu, the system will show a menu as below.



There're 8 timer in "Timer Setting" window. User can set each timer according to their own needs.



Once the Timer is ON, the timer will work not matter the STB is in standby mode or playing mode.

1 . Timer Mode: press Left/Right to choose Option: OFF/ Once/ Daily

2 . Timer Service: press Left/Right to choose Option: Channel/ Record

3 . Wakeup Channel: press Left/Right to choose one by one or press OK to enter into the channel list to choose .

4 . Wakeup Date: use number key to input the wakeup date according to user's needs.

5 . On Time: use number key to input

6 . Duration: use number key to input

Once the time's up, the STB will automatically switch to standby mode. If user don't want this function work, he/she can set the duration as "00:00".

3.6. Parental Lock

When enter into "Parental Lock" menu, the system will show a menu as below.



1. Menu Lock: press Left/Right to switch ON/OFF.

2. Channel Lock: press Left/Right to switch ON/OFF.

3. New Password: input 4 numbers as the new password.

4. Confirm Password: input the new password again.

If the password entered in "New Password" and "Confirm Password" is the same, there will show a dialogue "Change password successfully", then the new password will be saved by STB. If the password entered in "New Password" and "Confirm Password" is not the same, the highlight will turn back to "New Password" automatically. User need to input the new password again.



If the STB has been set a menu lock, there will show a dialogue asking user to input password before user enter into the Parental Lock menu. The default password is "0000".

3.7. OSD Setting

When enter into "OSD Setting" menu, the system will show a menu as below.



If the STB has been set a menu lock, there will show a dialogue asking user to input password before user enter into the Parental Lock menu. The default password is "0000".

4 . Tools

Choose the 4th symbol "Tools" on the main menu, then press OK to enter into the Edit Channel menu.



In Tool menu, user can press UP/DOWN to move highlight

and press OK to open a new window like Information, Factory Setting, Common Interface, CA Slot Setting, Upgrade By USB, Dump By USB, Remove USB device safely.

4.1. Information



User can check the detail informations of the STB.

4.2. Factory Default



When enter into Factory Setting menu, user will see "this operation will load default and erase all the channels that user added, continue? ". User need to choose YES or NO according to his/her own needs.

4.3. Common Interface



When the STB don't insert CI modual, the Common Interface menu will show "Slot 1: Not Available "

When the STB insert a CI modual, user can press OK on "slot 1: XXXX" to enter into the card information menu. In the card information menu, user can check the detail informations.

4.4. CA Slot Setting

When enter into "CA slot Setting" menu, the system will show a menu as below.



- 1 . CA Slot Clock Setting: 6.12MHz/ 3.57MHz

User can set the CA Slot Clock Setting according to his/her smart card.

- 2 . CA System

When the STB insert a smart card into the CA slot, there will show the informations of the inserted smart card on CA System. When the STB don't insert any smart card, there will show "Unknown" on CA System.

After user finished the setting, press EXIT to exit from current menu. There will show "Clock will be valid after restart!"

4.5. Upgrade by USB

When enter into "Upgrade by USB" menu, the system will show a menu as below.



1. Copy the firmware into you U-disk, then connect it with the receiver.

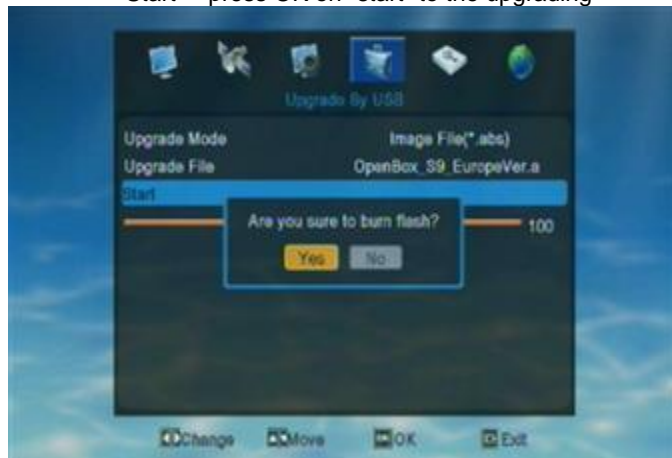
2. Open the menu of the receiver, Find Tools then you can see "upgrade by USB".

3. When in Upgrade by USB window, you can see "Upgrade Mode", "Upgrade File" and "Start"

"Upgrade Mode"---choose "image Fil(*.abs)"

"Upgrade File" ---choose the name of the new firmware

"Start"---press OK on "start" to the upgrading



4. when finished the upgrde, receiver will restart automaticly.

4.6. Dump by USB

When enter into "Dump by USB" menu, the system will show a menu as below.



If user want to dump a image file, pls choose the Dump Mode as "Image File*.abs". Then you'll see the below window. User can choose the files he/she want to dump by press green key, then press yellow key to start to Dump.



If user want to dump a Misc file, pls choose the Dump Mode as "Misc Files". Then you'll see the below window. User can choose the files he/she want to dump by press green key, then press yellow key to start to Dump.



4.7. Remove USB device safely

When press OK on "Dump by USB" menu, user will see a new window as below.



5. Media

Choose the 5th symbol "Media" on the main menu, then press OK to enter into the Media menu.



In Media menu, user can press UP/DOWN to move highlight and press OK to open a new window like HDD Information, PVR Setting or Media Player.

5.1. HDD Information

In Media menu, press UP/DOWN to move highlight to "HDD Information" then press OK to confirm the choice and enter into "HDD Information" menu.



User can check HDD detail informations in this menu.

5.2. PVR Setting

In Media menu, press UP/DOWN to move highlight to "PVR Setting" then press OK to confirm the choice and enter into "PVR Setting" menu as below.



Jump

Move the highlight to "Jump" and press [OK] Key. It will display "Jump" as below.

Press [Left/Right] to switch the Jump time. The option is 30 second, 1 min, 5 min, 10 min, 30 min.

When you play the record program, press the [PREV/NEXT] Key can Jump to previous and next program to see it.

5.3. Media Player

In Media menu, press UP/DOWN to move highlight to "Media Player" then press OK to confirm the choice and enter into "Media Player" menu as below.



User can see Music, Image, Video and Record and the top of the above window.

press 1 to to switch media format
Press 2 to open the sort window

5.3.1 Music



- ✧ press 1 to switch media format.
- ✧ press 2 to open sort window
- ✧ press 3 to open setup window
- ✧ Red color key to open the play list
- ✧ Green color key to make a favor mark on the choice
- ✧ Yellow color key to make favor mark on all the choice
- ✧ Blue key color key to enter edit window

Edit



Sort

User can press UP/DOWN to move highlight to choose Default/Name (A-Z)/ Name (Z-A)/ Image list/Music list the press OK on any of the choice to sort the list.



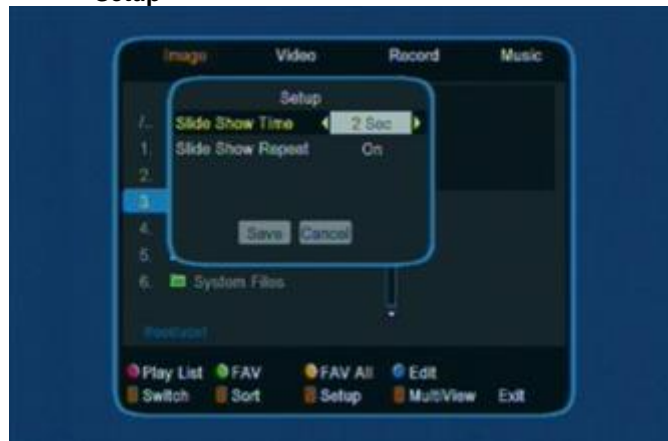
Press EXIT to exit form the window.

5.3.2 Image



- ✧ press 1 to switch media format
- ✧ press 2 to open sort window
- ✧ press 3 to open setup window
- ✧ press 4 to open multiView window

Setup



5.3.3 Video



- ✧ press 1 to switch media format
- ✧ press 2 to open sort window
- ✧ Blue key to open edit window

Edit



- ✧ Red key to rename
- ✧ Green key to copy
- ✧ Yellow key to delete
- ✧ Blue key to create a new folder

5.3.4 Record

In Media menu, press UP/DOWN to move highlight to "Record Manager" then press OK to confirm the choice and enter into "Record Manager" menu.



In Record menu, user can check all the available record in HDD or U-disk. Red key to rename, Green key to lock, Yellow key to delete.

Lock

Press UP/DOWN to move highlight in the record list to choose the one user want to lock. When a record has been locked there will show a lock mark on the right side of the record. After finish this setting, the STB will ask user to input password when he/she want to play the locked record. Once user input the correct password, the STB will cancel the lock mark of the record.

The default password is "0000".

Rename

- ✧ Red color key to switch capital/small letter
- ✧ Green color key to delete the inputted char
- ✧ Yellow color key to make confirm
- ✧ Blue color key to cancel the operation and exit .

Play

Press UP/DOWN to move highlight in the record list and press OK/PLAY to play the chose record. When playing the record, the screen will show like the below picture.



Press Stop to exit from playing.

6 . Network Setup

Choose the 6th symbol "Network Setup" on the main menu, then press OK to enter into the Network Setup menu.



In "Network Setup" menu, user can press UP/DOWN to move highlight and press OK to open a new window like Network local setting and Twin Protocol setting.

6.1. Network Set up

When enter into "Network Local Setting" menu, the system will show a menu as below.



User can check the IP Address, Subnet Mask, Gateway, DNS Primary and DNS Secondary informations in this window. Press Left/Right can switch "DHCP" ON/OFF when the highlight is on "DHCP".

When "DHCP" is ON, the STB will load all the network settings automatically. If the loaded net work setting is not correct, user need to switch OFF the "DHCP" and input the settings by hand.

After finished all the settings, user need to move the highlight to "Apply" and press OK to apply all the new settings. Before the new setting to be applied, the STB will show a dialogue "Apply Network Local setting?". User can choose YES to apply the new sttings or choose NO to exit from the dialogue without applying any new settings.

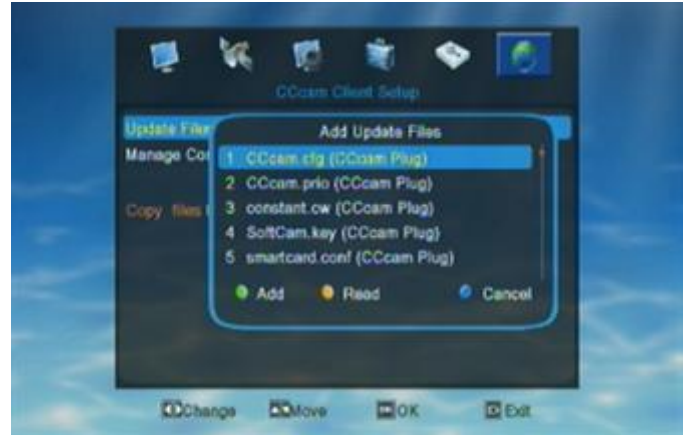
Press EXIT to exit from current menu.

6.2. Cccam Client Setup

When enter into "Cccam Client Setup" menu, the system will show a menu as below.



In "Update Files By USB", user can load the C-line into the STB. When enter into "Update Files By USB" there will show a window "Add update Files", as below.



In "Add update Files" window, user need to choose the format of their C-line (Option: Cccam.cfg, constant.cw.) then press the yellow key to start to read the C-line from connected U-disk. If use don't want to load C-line, press Blue key/EXIT to cancel the operation/exit from the current window.

Q&A

Q1: Why the STB can't read anything when start to read?

A 1: pls check whether U-disk has been connected to the STB

A 2: check to see whther user has copied the C-line into the U-disk

A 3: check to see whether the format of C-line is correct

In "ManageConfigFiles", user can check the loaded C-line.



In "Manage Config Files", user need to choose the C-line format, then STB will show you the C-line which has been already load into the STB.

*If use didn't load any C-line into STB, there will show nothing when user check on "manage Config Files".

Press blue key/EXIT to exit from current window.

If use don't like to load C-line from U-disk, he/she can add the C-line manually. User need to input the informations like Protocol type, Host/Port/User name/Password of the C-line.



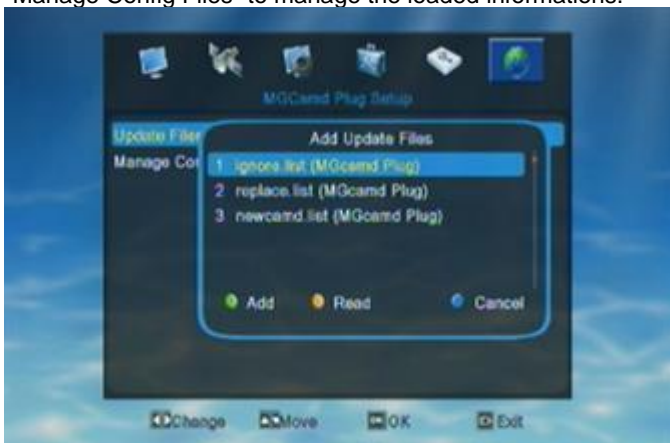
- ✧ Red color key to switch capital/small letter
- ✧ Green color key to delete the inputted char
- ✧ Yellow color key to make confirm
- ✧ Blue color key to cancel the operation and exit.

6.3. MGCamd Plug Setup

When enter into "MGCamd Plug Setup" menu, the system will show a menu as below.



First user need to enter into "Update Files By USB" window to load the informations from U-disk. Then go to "Manage Config Files" to manage the loaded informations.



In "Add update Files" window, user need to press Blue/OK key to choose the format of which files to add.. and Yellow key to start to read from connected U-disk.

When start to read, the window will show as below.



If STB can't read any MGCamdIf use don't want to load C-line, press Blue key/EXIT to cancel the operation/exit from the current window.

Q&A

Q1: Why the STB can't read the C-line?

A 1: pls check whther U-disk has been connected to STB

A 2: check to see whther user has copied the MGCamd informations into the U-disk

A 3: check to see whether the format of MGCamd informations is correct. After user load the MGCamd informations into STB, he/she can go to "manage Config Files" to check and manage the loaded informations.



If there is no MGCamd informations loaded in STB, user will see nothing when entering into "manage ignore list" as following shows.



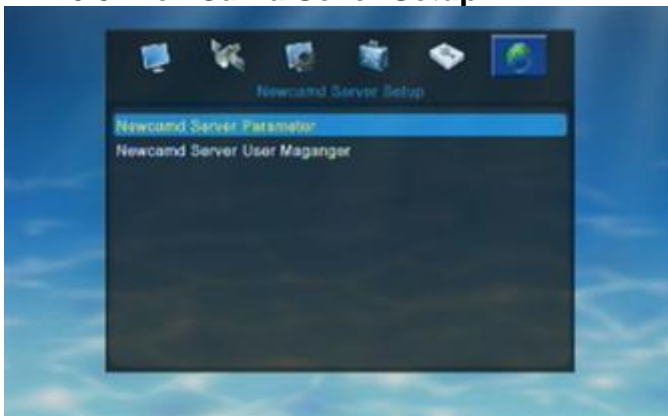
6.4. Twin Protocol Setup

When enter into "Twin Protocol Setup" menu, the system will show a menu as below.



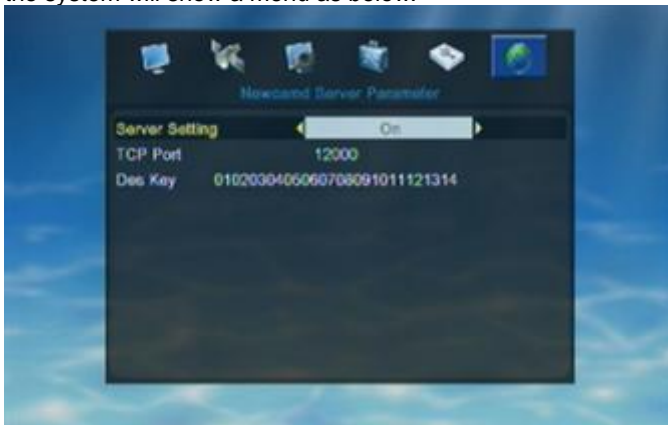
1. Twin Protocol Setting: ON/OFF
2. Band: 9600/ 14400/ 19200/ 38400/ 57600/ 115200/ 128000/ 256000
3. Date Bits: 8
4. Stop Bits: 1/2
5. Parity: None/ Even/ Odd

6.5. NewCamd Sever Setup



In "Newcamd Server Parameter" user can set the Newcamd informations. In "Newcamd Server User Manager" user can manage the input Newcad informations.

When enter into "Newcamd server Parameter" menu, the system will show a menu as below.



User can switch server setting ON/OFF by pressing Left/Right when high is on "Server Setting". When highlight is on "TCP Port" or "Des Key" user can input informations by pressing the number key. After finished all settings press EXIT to save the new settings and exit from current menu.

When enter into "Newcamd server User Manager" window, the system will show a menu as below.



If user didn't input any Newcamd information in STB, there will show nothing in "Newcamd Server User Manager" window. Just like the above pic. shows.

User can add/edit/delete Newcamd informations by pressing color key

- ✧ Green key to add new Newcamd informations
- ✧ Red key to edit the input Newcamd informations
- ✧ Blue key to delete the highlighted Newcamd
- ✧ Yellow key to delete all the input Newcamd

When user opened "Add Account" window by pressing Green key, the window will show as below.



User need to input the Newcamd informationa manually, like user name, password and Emm Allow.

- ✧ Red color key to switch capital/small letter
- ✧ Green color key to delete the inputted char
- ✧ Yellow color key to make confirm
- ✧ Blue color key to cancel the operation and exit from the window.

Press EXIT to exit from current window without save all the added informatons.